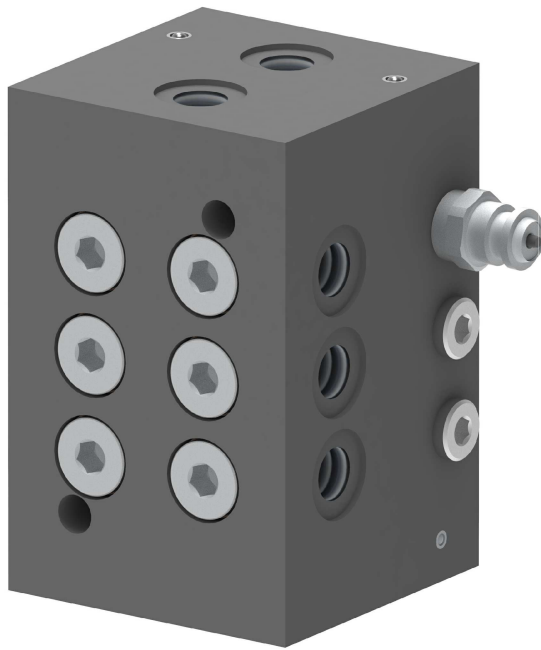


VOP33/A
307.000.000



Progressive distributor for AIR-OIL system

General aspects

Distributors from series VOP33 have been designed to be constructed as monoblock and they are suitable for use with centralised lubrication installations through the air-oil system.

They operate according to the progressive system by distributing to the outlets the lubricant provided through the inlet.

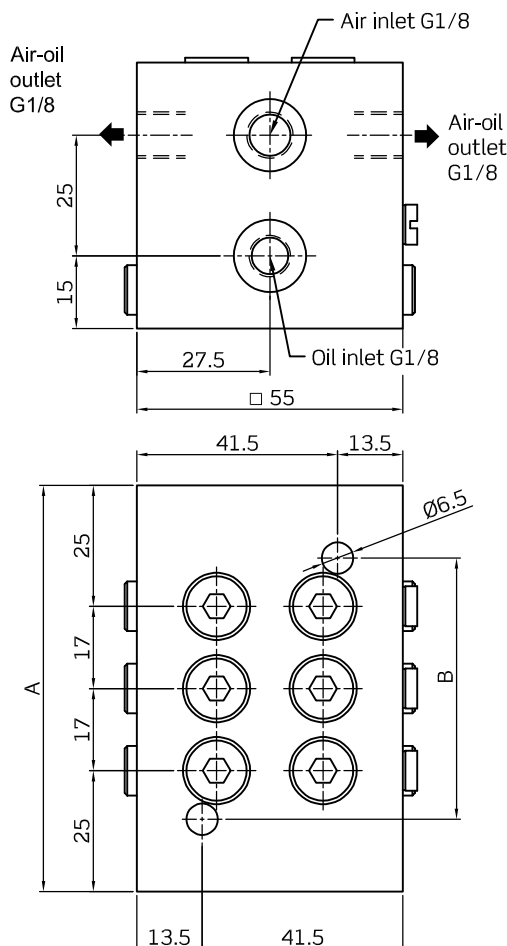
The flow rate ratio can be increased by combining outlets (plugging, bypassing).

Technical characteristics

Outflow rate..... 110 mm³/stroke
Material..... steel with treated surface
Lubricant..... from 30 up to 320 cSt
Working pressure..... 20 ÷ 150 bar
Número máximo de ciclos..... 200/minute
Working temperature..... -20°C ÷ + 80°C
Maximum inlet flow rate..... 500 cm³/minute

Dimensions

N° outlets	6	8	10	12
A	84	101	101	135
B	54	71	88	105



Order references

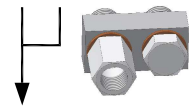
VOP33 / A-1 / X - X

Number of outlets	X	Monitoring system	X
6	3	Without	0
8	4	Visual	1
10	5	Micro IP40	2
12	6	Inductive sensor	3

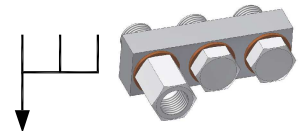
External bypasses

To communicate and combine outlets

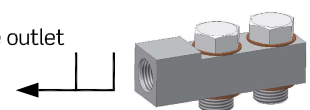
956400411
Double bypass
with front outlet



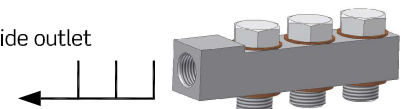
956400511
Triple bypass
with front outlet

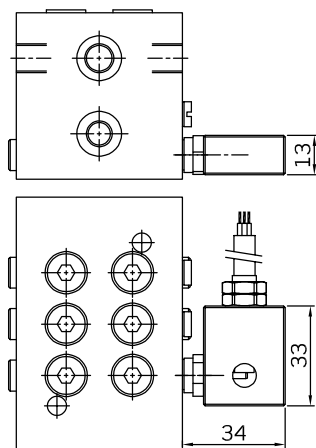
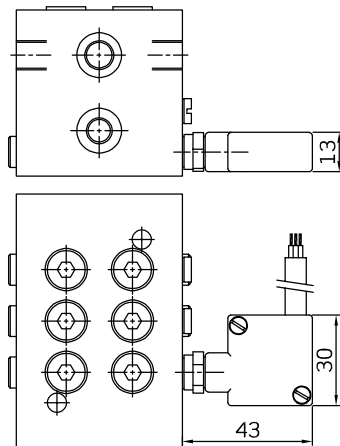
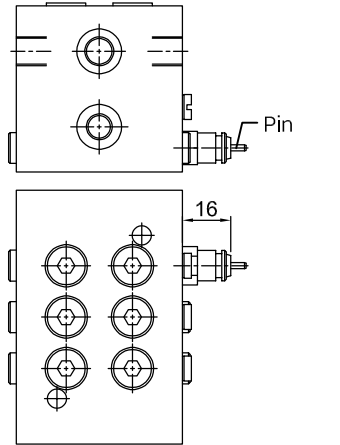


956400611
Double bypass with side outlet



956400711
Triple bypass with side outlet





Monitoring systems

① Visual control

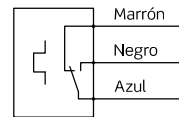
The movement of a pin connected to the dosing plunger externalises its movements allowing for the visual control on the installation's performance.

Important: visual control is not an after sales supply product, it needs to be incorporated in factory

Working temperature..... -15°C ÷ +120°C
 Maximum number of cycles..... 200/minute

② Electrical control with micro (IP40)

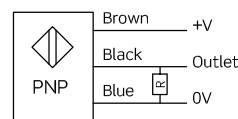
It consists of an aluminium box with a cover within where a microswitch can be operated through the movement of a pin connected to the dosing plunger.



Micro..... 250V 5A
 (EN61058 / UL1054)
 Temperature..... -15°C ÷ +120°C
 Unit protection..... IP40
 Connection..... cable (2m)
 Max. n° cycles..... 100/minute

③ Inductive sensor

It consists of an anodised aluminium body to which an inductive sensor is incorporated. The sensor detects the movement of a pin connected to the dosing plunger opening and closing its contact.



Function..... NO
 Voltage..... 10 ÷ 30V
 Max. load admitted..... 200 mA
 Protection..... IP65
 Temperature..... -10°C ÷ +70°C
 Connection..... cable (2m)
 Max. n° cycles..... 200/minute

